



S-BAND MULTI COUPLER

Model No: US/MC/S-4/A

Description

This S-Band Multi Coupler is available for 19" wide and 1U high rack mountable systems. It Offers 4 equal outputs between 2.0-2.4 GHz. It is easily controlled and monitored remotely, using TCP/IP interface and has capability of allocating a unique IP address. The system could be easily controlled with standard software programs.

Product Features

- Wide Band - Input / Output.
- TCP/IP- RJ45 connection for remote monitoring.
- Sturdy 19" rack mountable case.
- Internal capability of allocating unique IP address.
- Capable of a unique IP address.
- High Rejection.



Specifications

Electrical	
Frequency Range	2.0 - 2.4 GHz
Number of Inputs	1
Number of Outputs	4 to 8
P1 dB	10dBm min.
Noise Figure	3dB max.
Gain	15dB
Gain Flatness	+/- 0.5 dB
Rejection @ 2160 MHz & @ 2440 MHz	40dB min.
Port to Port Isolation	50 dB min.
Isolation between Output Ports	50 dB min.
No damage input level	>1 Watt
Input / Output VSWR	1.5:1
MTBF	50,000 Hours
Voltage	100-264 V AC
Frequency	50-60 Hz
Socket	C13 Standard

Mechanical	
Output Connectors	N-Type
Output Impedance	50 Ohms
Input Conector	N-Type
Input Impedance	50 Ohms
Dimensions	19" x 1.75" x 20" width x height x depth
Weight	Approx. 6 Kg
Environmental	
Operating Temperature Range	0 to 55 deg C
Location	Indoor Use Only
Humidity	90% Non-Condensing
Storage Temperature	-45 deg to +85 deg C
System Control	
Remote Control	TCP/IP: RJ 45 Ethernet Port RS 232: 9 Pin D-Type Female
Front Panel Alarms	Power ON: LED
IP Address allocation	Using telnet with Raw TCP/ IP Connection

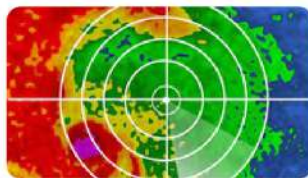
Additional Options Available

- No of O/p ports option available
- Higher P1 dB point available.
- Variable gain available.
- SMA Input / Output connector available.
- Also available for C, X and L-Band frequencies.
- Customization can be made based on the customer requirements.

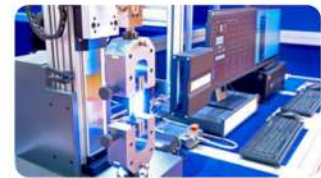
Applications



Satellite Communications



Weather Radar



ATE Signal Source



Civil Aviation Radar



Military



Broad Cast

